



# Wildog Accessories

## Installation instruction

### **PRODUCT DESCRIPTION:**

- Isuzu Gen 7 front bumper



### PRODUCT SAFETY & LEGAL DISCLAIMER

**• IMPORTANT READ ALL INSTRUCTIONS CAREFULLY BEFORE INSTALLING. FAILURE TO DO SO MAY CAUSE PERSONAL INJURY OR DAMAGE TO PRODUCT AND/OR PROPERTY.**

- Review the product package and contents prior to beginning the installation.

**Take care when opening the packaging and removing items. If a return is needed you will want to return the product in its original packaging if possible.**

- This instruction guide is provided as a GENERAL installation guide, some vehicles vary dimensionally and may require additional steps.
- Test fit the product on the vehicle prior to any third party modifications and or finishing. The manufacturer and/or distributors do not accept responsibility for third party charges, labor and or third part replacement modifications. Some modifications may void the factory warranty.
- Exercise due-diligence when installing this product. The manufacturer and distributors of this product do not accept any responsibility for vehicle damage or personal injury resulting from the installation of this product. Careless installation and operation can result in serious injury or equipment damage.
- This product is for general off-road use. All liability for installation and use rests with the owner/operator.

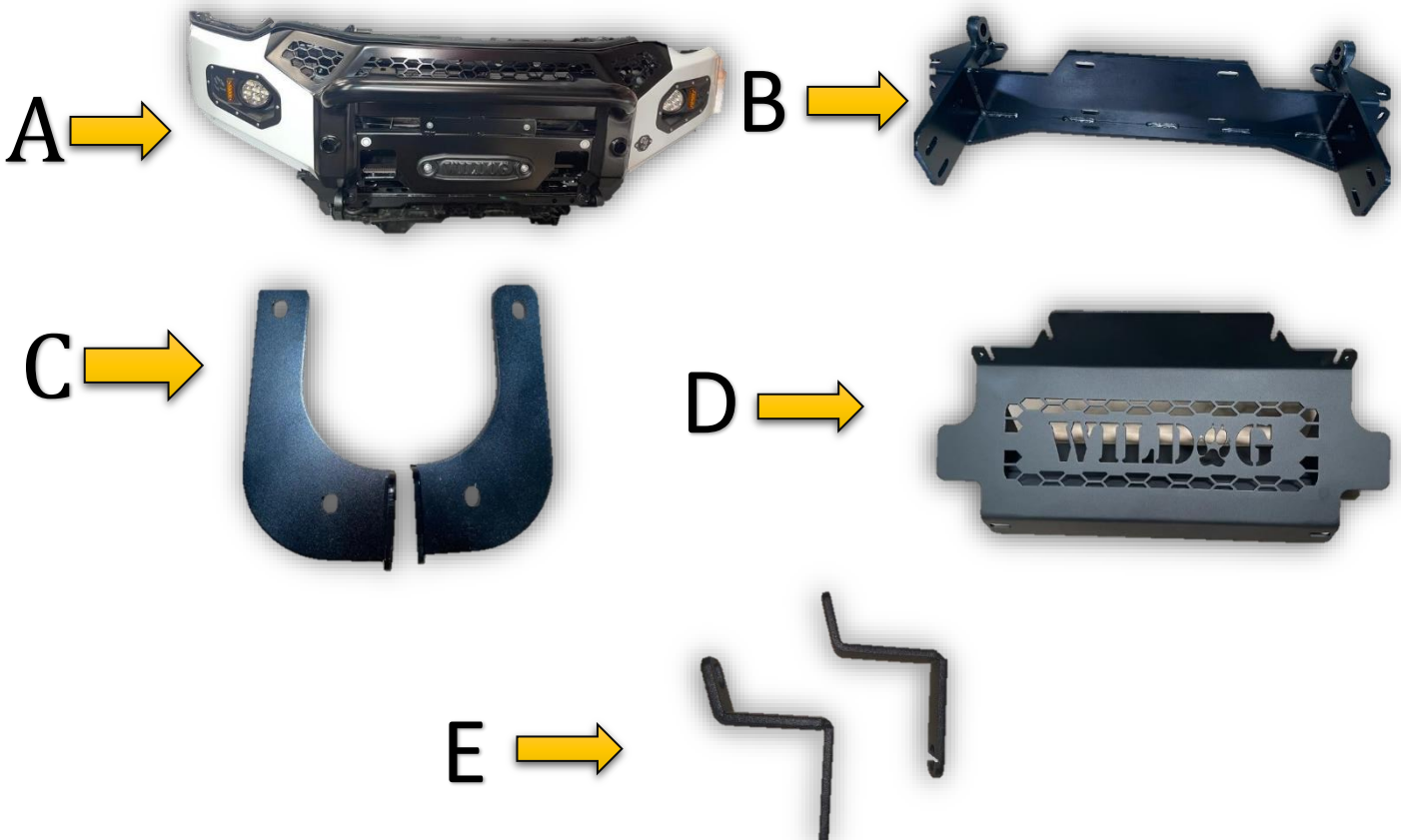


# Wildog Accessories

## Installation instruction

### PARTS INCLUDED IN THE LIST:

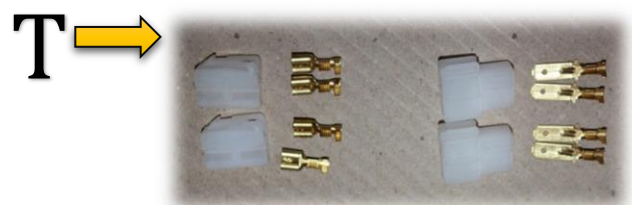
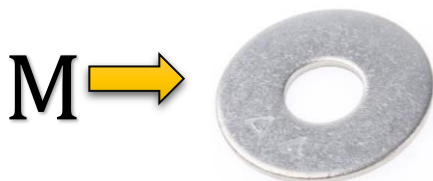
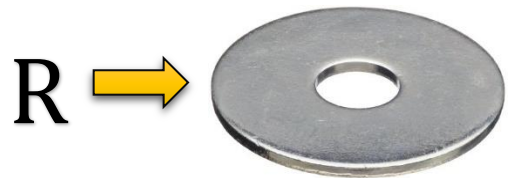
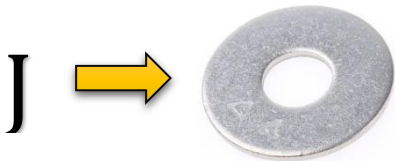
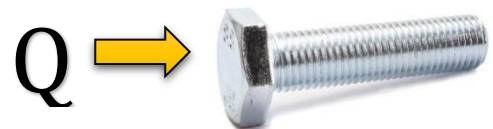
A	Complete & assembled bumper	1
B	Winch plate	1
C	Chassis Stiffeners	2
D	Radiator plate	1
E	Headlight brackets	2
F	M6 x 30 Hex Bolts	2
G	M6 Washers	4
H	M6 Nyloc Nuts	2
I	M8 x 40 Hex Bolts	4
J	M8 Washers	8
K	M8 Nyloc Nuts	4
L	M10 x 40 x 1.5 Hex Bolts	4
M	M10 Washers	16
N	M10 Nyloc Nuts	6
O	M10 x 80 x 1.5 Hex Bolts	2
P	M10 X 40 X 1.25 Hex Bolts	4
Q	M12 x 40 x 1.75 Hex Bolts	6
R	M12 x 30 x 3 Semi Fender Washers	12
S	M12 Nyloc Nuts	6
T	Sets of light connectors	2





# Wildog Accessories

*Installation instruction*







# Wildog Accessories

## Installation instruction

**Please insure that all parts and fasteners are accounted for before starting the fitment, if any parts are not included please give us a call on [065 100 62525](tel:06510062525) or [074 227 1524](tel:0742271524) and we will gladly assist you.**

ESTIMATED TIME FOR INSTALLATION:

3-4 hours

*Please follow the necessary steps to complete your fitment.*

**BEFORE**



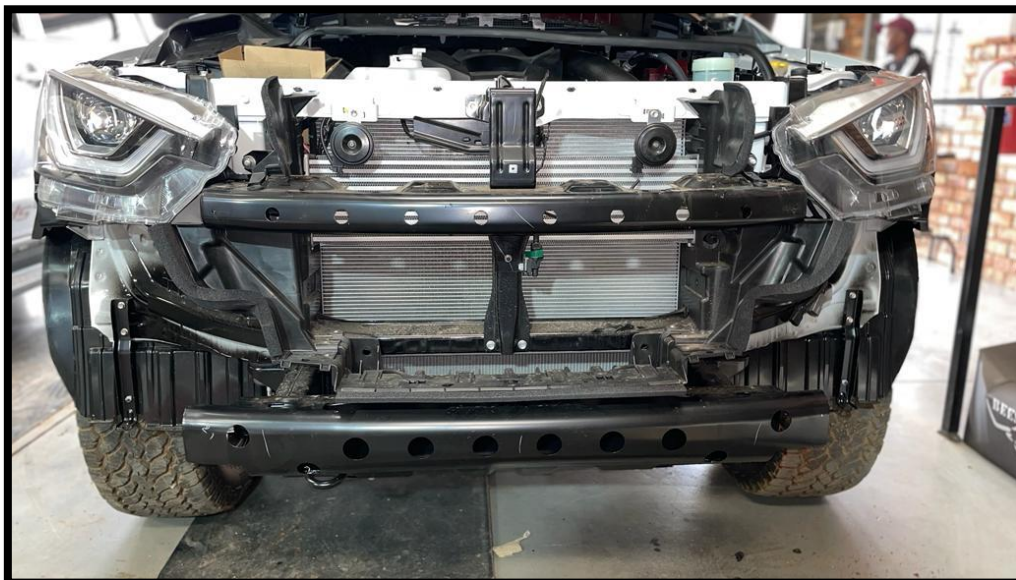
**AFTER**



### STEP 1

Remove the following from the vehicle:

- Plastic bumper
- Standard grill.



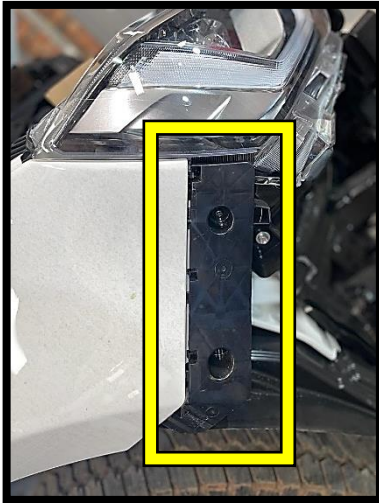


# Wildog Accessories

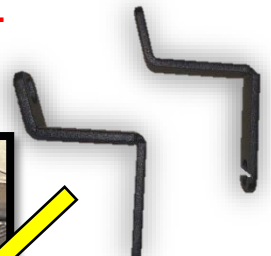
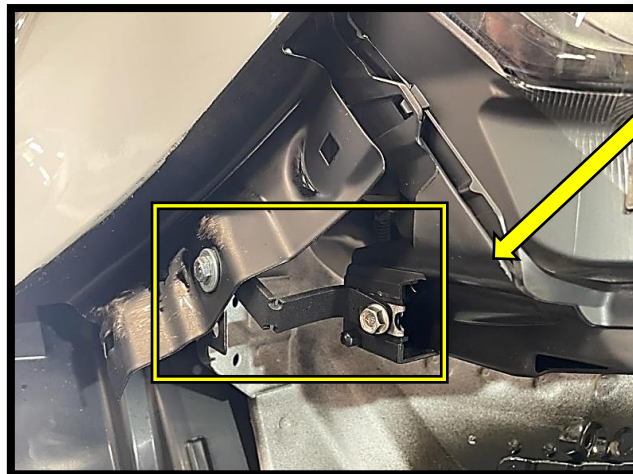
## Installation instruction

### STEP 2

- Remove the indicated bumper brackets next to the head lights just below the fenders on both sides of the vehicle.
- When removing the bumper brackets as shown above Tape off all edges with masking tape.
- Spray the area marked with black spray paint.



- Add the bracket as shown below to the side of the fender and to the head light bracket to ensure it does not move and is steady.
- **these brackets control the headlights position, ensure the headlights does not move from the original position when tightening this bracket.**





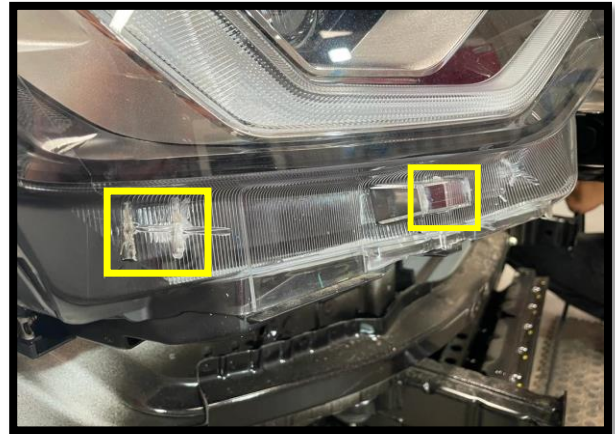
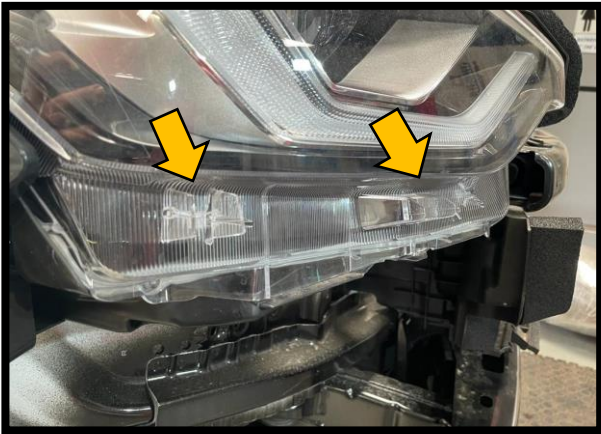


# Wildog Accessories

## Installation instruction

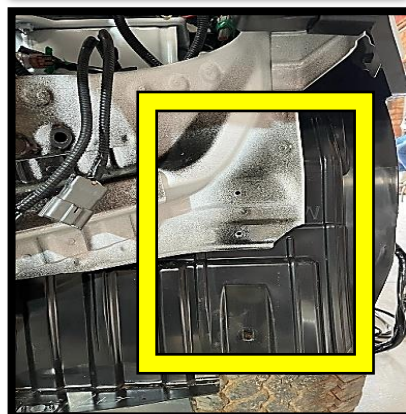
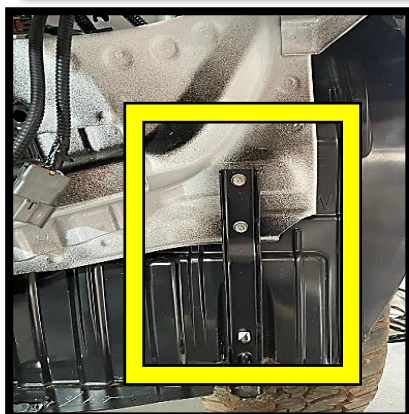
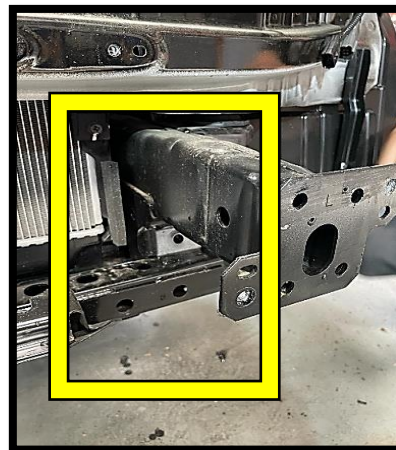
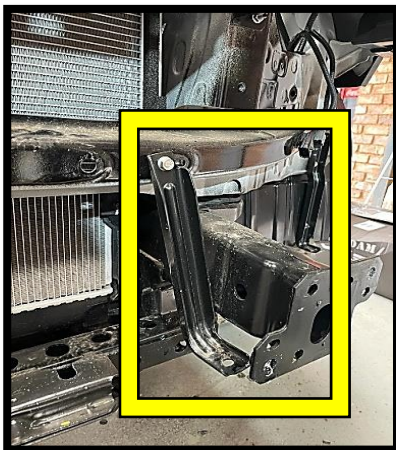
### STEP 3

- Do not cut the Knobs at the bottom of the head light only cut of the fin on the knob and the fin on the corner of the light mould.



### STEP 4

- Remove the following brackets on both sides of the vehicle.
- Remove stiffener on the front end of the chassis legs.



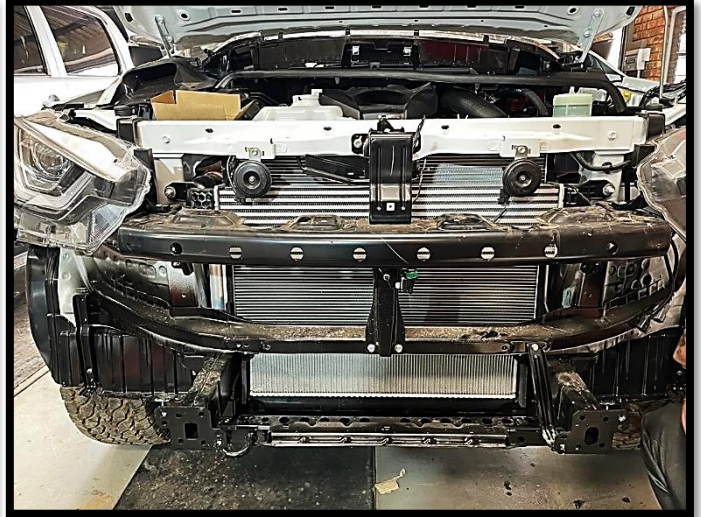
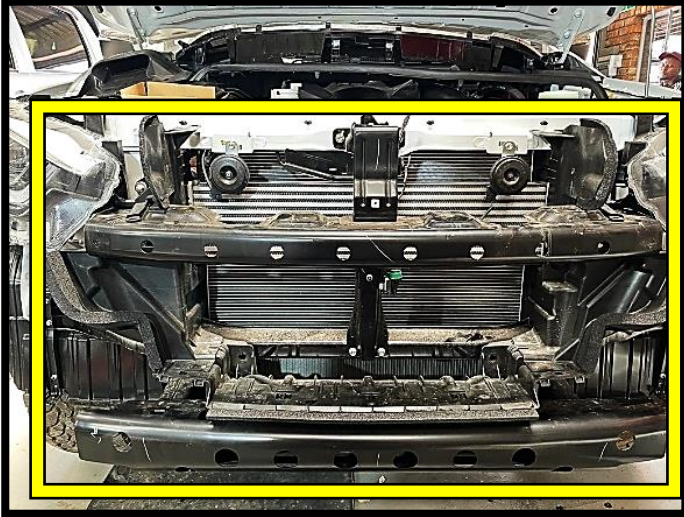




# Wildog Accessories

## *Installation instruction*

- Remove the Air ducting plastics indicated on both sides of the vehicle.



### **STEP 5**

- Bolt the stiffeners to the side of the chassis.

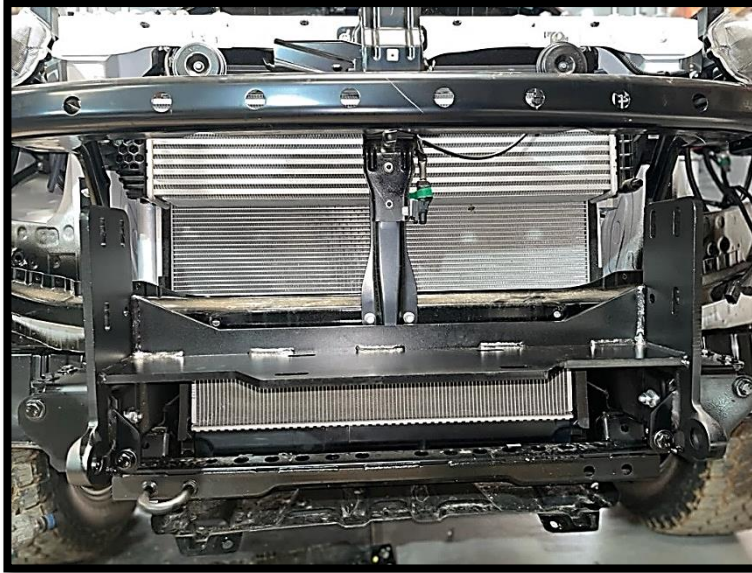




# Wildog Accessories

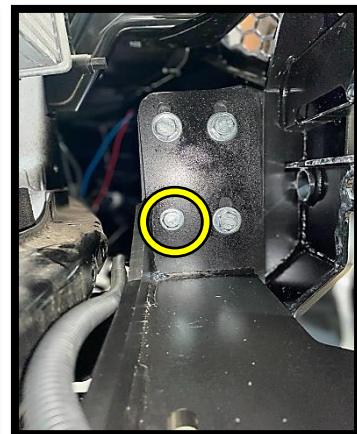
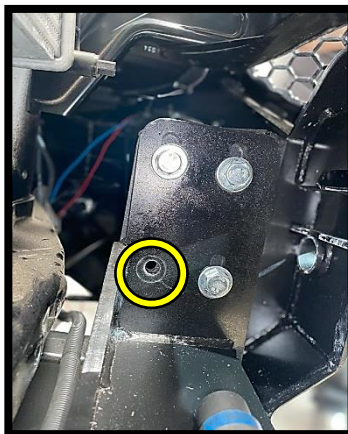
## Installation instruction

- Bolt the winch plate to the chassis stiffener and chassis flange.
- Ensure that the winch plate's vertical brackets are in alignment and centred with the vehicles chassis before tightening all fasteners.



### STEP 6

- Torque the chassis mount fasteners to (55 NM).
- Spray and mark each fastener afterwards with a paint marker.
- Ensure that the bumper is not pinching the lights or the fenders when fastening all bolts.
- When the Bumper is aligned drill two (M10) holes for the locking bolts and fasten properly.
- Fasten locking bolts and mark them with a paint marker.
- Ensure that the bumper is not pinching the lights or the fenders when fastening all bolts.







# Wildog Accessories

## *Installation instruction*

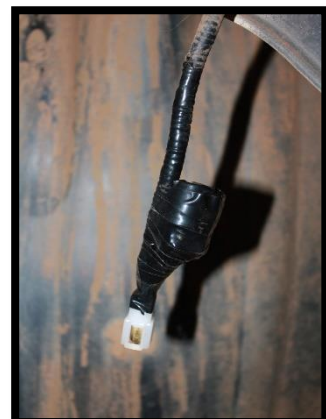
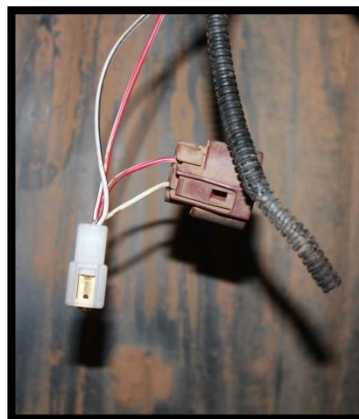
### STEP 7

- When the bumper is fitted insert the PDC Holders into the existing holes on the bumper from the front side and then insert the sensor from the rear into the original holder.
- Check that all sensors are working before letting the vehicle leave your premises.
- When the bumper is fitted and perfectly aligned on both sides remove the top and bottom part of the grill from each other.
- Only the top part will be fitted to the vehicle.



### STEP 8

- Do not cut any wires, or remove the standard OEM light plugs.
- Strip back to small pieces of insulation from the wire and attach the female lugs to the harness.
- Cover and tidy all open wires and loose parts.
- Connect the male lugs to the supplied fog light and connect to the wiring harness plugs.
- Connect the fog lights to the harness.





# Wildog Accessories

## Installation instruction

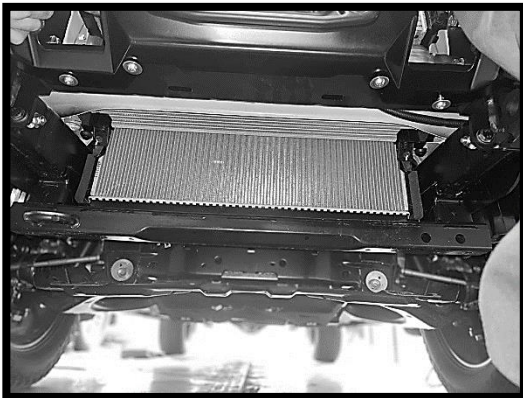
### STEP 9

- Cut the inner fender liners evenly with the bumper and tuck them in neatly behind the bumper.
- Secure liner from the inside with cable ties to secure them in place.



### STEP 10

- Tighten the radiator plate to the bottom of the bumper



- Please ensure that all parts and fasteners are fitted and tightened before letting the vehicle leave your premises.
- Retention all fasteners after 3 months or 500KM of installation to ensure all parts are still fastened and safe for the client.

**Here is too many safe adventures.**





# Wildog Accessories

## Installation instruction

A Warranty form is included with all Wildog Accessories orders placed, please insure that it is completed with every fitment and retention of the bumper if there is no Warranty form completed your 1 year Warranty on the bumper will be voided.



**Wildog Accessories (Pty) Ltd**

www.wildog.co.za  
sales@wildog.co.za  
17 Akwamaryn Street  
Klerksoord Pretoria

Contact numbers:  
0651006252  
0742271524

Jobcard

Fitment Centre Reference:

Date:

INSTALLATION AND WARRANTY FORM									
CUSTOMER DETAIL									
Customer Name									
Address									
Telephone No	Cell Number	Postal Code				E Mail Address			
DISTRIBUTOR / FITMENT CENTRE DETAIL									
Company Name									
Address									
Telephone No	Technician Name				Contact Person				
VEHICLE DETAIL									
Vehicle Make		Model		Year					
Registration No		VIN Number		Odo/Speedo Reading					
ACCESSORIES FRONT			ACCESSORIES REAR			ACCESSORIES			
Bumper	Yes	No	Bumper	Yes	No	Bash plate	Yes	No	
Winch	Yes	No	Spare wheel carrier	None	Single	Lower c/arms	Yes	No	
PDC's	Yes	No	PDC's	Yes	No	Transfer c/p	Yes	No	
Radar box	Yes	No	Towball	Yes	No	Rock Sliders	Yes	No	
Bolt on towbar	Yes	No	Wiring harness	Yes	No	Roof rack	Yes	No	
Other			Other			Other			
Surface coating			Surface coating						
INSTALLATION DETAIL					RE-CHECK DETAIL				
Torque checks		NW			Torque checks				
Lock bolts		NW			Lock bolts				
Rubbbers					Rubbbers				
Led lights					Led lights				
COMPONENTS FITTED									
Front	Winch plate	Yes	No	Rear	Spine	Yes	No	Fitment Centre	
	Stiffners	Yes	No		Shell	Yes	No	Technician Name	
	Bumper Shell				Resistors	Yes	No		
	Radiator plate	Yes	No		Recovery points	Yes	No		
	Lights	Yes	No		Bumper step	Yes	No		
	Resistors	Yes	No		Lights	Yes	No		
	Other				Towball	Yes	No	Signature : Fitment Centre (At Re-Check)	
Serial #			Trailer plug	Yes	No				
				Other	Yes	No			
				Serial #					
CUSTOMER DECLARATION				OTHER				Signature : Customer (At Re-Check)	
Signature : Customer (At Fitment)				Signature : Fitment Centre (At Fitment)				Copy 1 - Customer copy after 500km Re-check	
								Copy 2 - Customers Copy at Installation	
								Copy 3 - To be returned to Wildog Acc	
								Copy 4 - Remain in book for Fitment Centre Records	

It is essential to complete this card in full. Return to Wildog accessories via email to validate this warranty. No warranty form, no claim. Warranty will be void if retention is not done